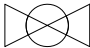
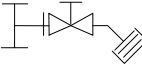


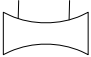


ERC601 - Row CW, 600mm, 42U, 1070mm Deep Drawing Guide

Sheet No.	Component /Detail	Description
1	Drawing Guide	Row CW 600mm 42U, 1070mm Deep, 380-416V, Drawing Guide
2	Isometric View (External)	Row CW 600mm 42U, 1070mm Deep, 380-416V, Isometric View (External)
3	General Arrangement	Row CW 600mm 42U, 1070mm Deep, 380-416V, General Arrangement
4	Top and Bottom Views	Row CW 600mm 42U, 1070mm Deep, 380-416V, Top and Bottom Views
5	Anchoring Details	Row CW 600mm 42U, 1070mm Deep, 380-416V, Anchoring Details
6	Isometric View (Internal)	Row CW 600mm 42U, 1070mm Deep, 380-416V, Isometric View (Internal)
7	Internal Views	Row CW 600mm 42U, 1070mm Deep, 380-416V, Internal Views
8	Internal Views (Rear)	Row CW 600mm 42U, 1070mm Deep, 380-416V, Internal Views (Rear)
9	Top and Bottom Piping	Row CW 600mm 42U, 1070mm Deep, 380-416V, Top & Bottom Piping
10	Pipe Connections	Row CW 600mm 42U, 1070mm Deep, 380-416V, Pipe Connections
11	Piping Diagram	Row CW 600mm 42U, 1070mm Deep, 380-416V, Piping Diagram
12	Connections Overview	Row CW 600mm 42U, 1070mm Deep, 380-416V, Connections Overview
13	Electrical Panel & Customer Junction Box	Row CW 600mm 42U, 1070mm Deep, 380-416V, Electrical Panel & Customer Junction Box

LEGEND			
SYMBOL	DESCRIPTION	SYMBOL	DESCRIPTION
	SHUT OFF VALVE		HOSE END DRAIN WITH CAP
	Y-STRAINER		SECOND STRAINER
	CURRENT SETTER		

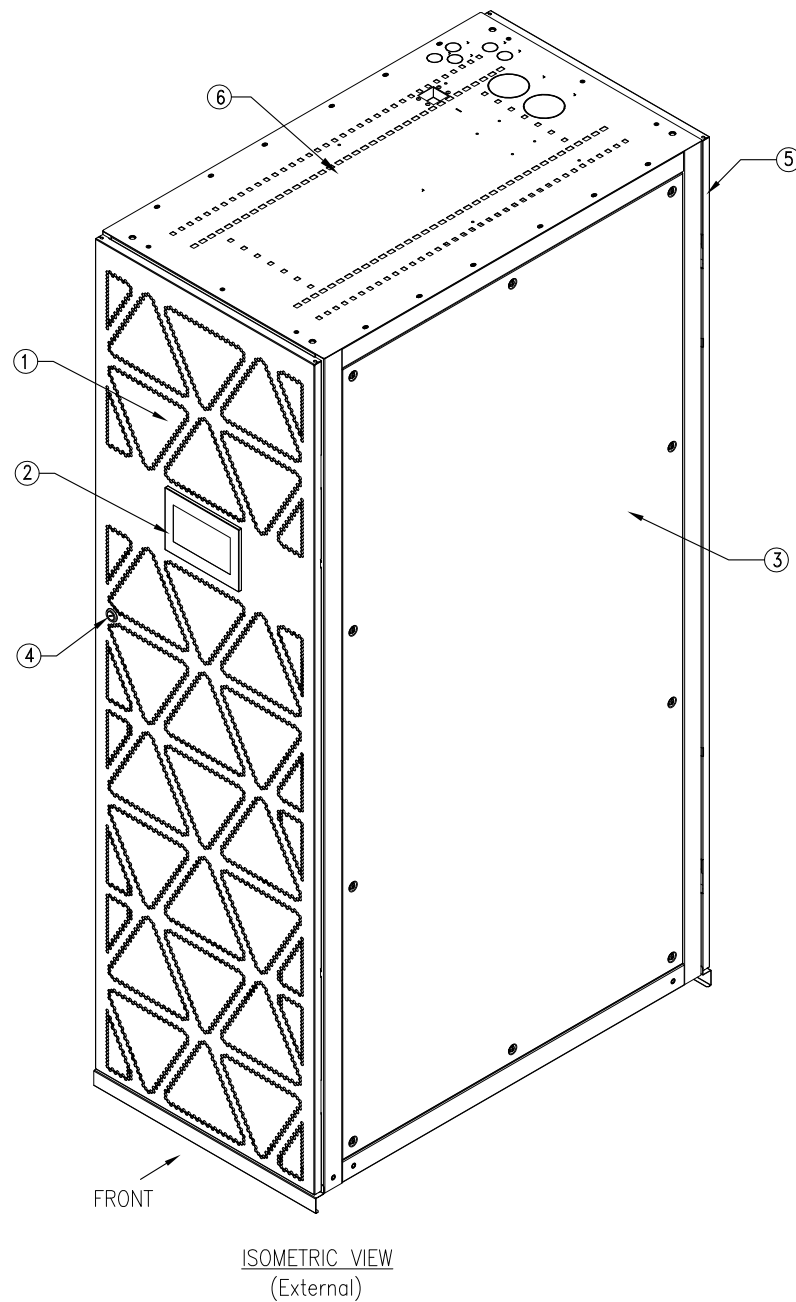
THIS DRAWING AND SPECIFICATIONS HEREIN ARE THE PROPERTY OF SCHNEIDER ELECTRIC AND SHALL NOT BE COPIED, REPRODUCED OR USED IN WHOLE OR IN PART, AS THE BASIS FOR THE MANUFACTURE OR SALE OF ITEMS WITHOUT WRITTEN PERMISSION FROM SCHNEIDER ELECTRIC. THIS DRAWING IS BASED UPON LATEST AVAILABLE INFORMATION AND IS SUBJECT TO CHANGE WITHOUT NOTICE.

Schneider
Electric

TITLE:
Easy Cooling
Row CW, Chilled Water
600mm, 42U, 1070mm Deep
380-416V, 3PH, 50/60Hz
DRAWING GUIDE

PROJECT: DRAWINGS SHEET 1 OF 13

DWG NO:	ERC601	REV.	0
DRAWN:	Stone Zhang/JP	19-DEC-19	FIRST
ENGINEER:	Paul Liu	03-JAN-20	ANGLE
APPROVED:	Tina Zhou	03-JAN-20	PROJECTION



- ① Perforated Front Panel
- ② Display Interface
- ③ Side Panel
- ④ Locking Latch
- ⑤ Rear Panel
- ⑥ Top Cover

NOTES:

1. INSTALLATION SHALL COMPLY WITH NATIONAL, STATE AND LOCAL ELECTRICAL REGULATIONS.
2. PLEASE REFER TO PRODUCT MANUALS FOR ADDITIONAL DETAILS PRIOR TO INSTALLATION AND SITE PREPARATION WORK.

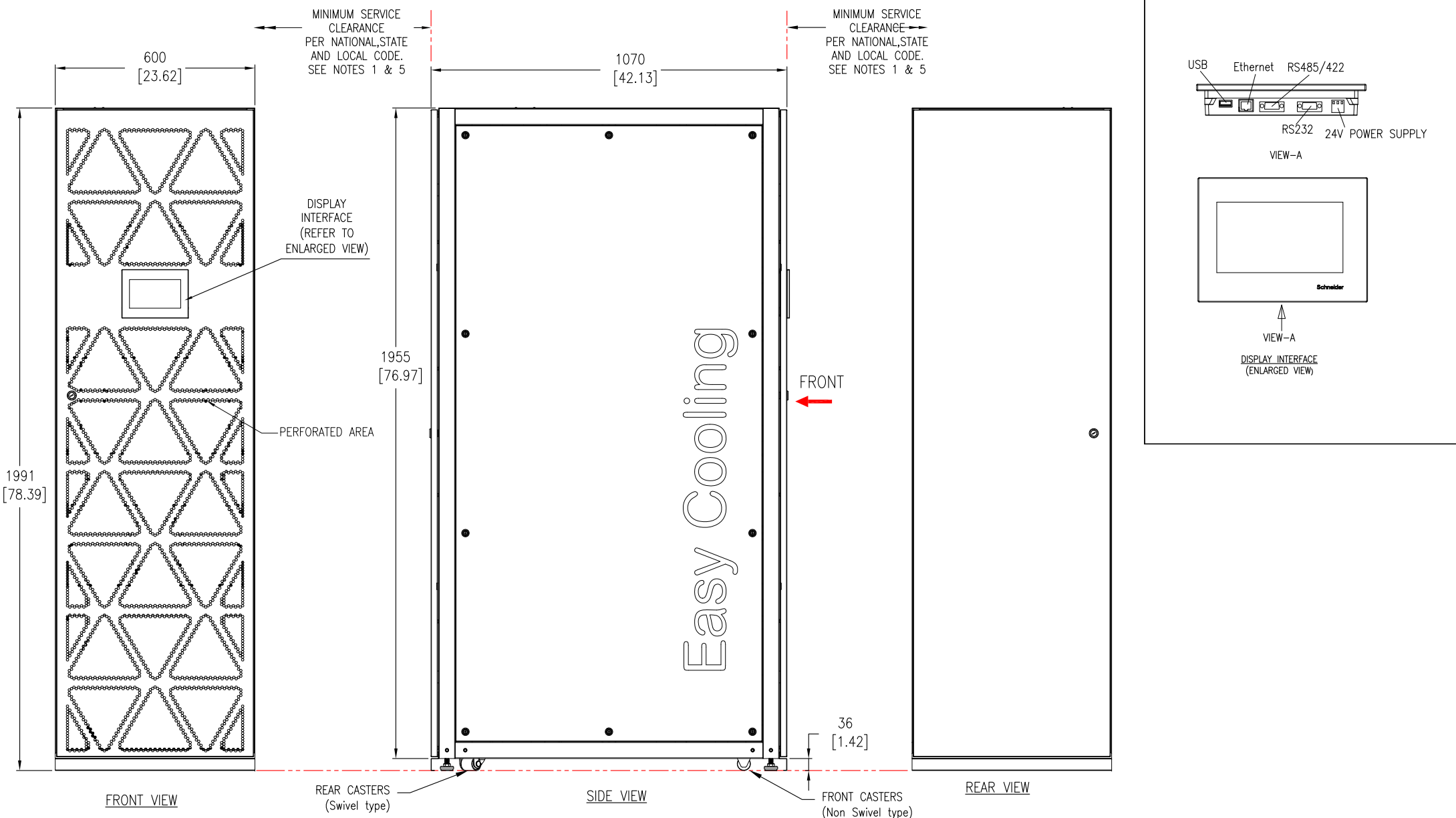
THIS DRAWING AND SPECIFICATIONS HEREIN ARE THE PROPERTY OF SCHNEIDER ELECTRIC AND SHALL NOT BE COPIED, REPRODUCED OR USED IN WHOLE OR IN PART, AS THE BASIS FOR THE MANUFACTURE OR SALE OF ITEMS WITHOUT WRITTEN PERMISSION FROM SCHNEIDER ELECTRIC. THIS DRAWING IS BASED UPON LATEST AVAILABLE INFORMATION AND IS SUBJECT TO CHANGE WITHOUT NOTICE.

Schneider
Electric

TITLE: Easy Cooling
Row CW, Chilled Water
600mm, 42U, 1070mm Deep
380~416V, 3PH, 50/60Hz
ISOMETRIC VIEW(EXTERNAL)

PROJECT: DRAWINGS SHEET 2 OF 13

DWG NO:	ERC601		REV.	0
DRAWN:	Stone Zhang/JP	19-DEC-19	FIRST ANGLE PROJECTION	
ENGINEER:	Paul Liu	03-JAN-20		
APPROVED:	Tina Zhou	03-JAN-20		



NOTES:

1. INSTALLATION SHALL COMPLY WITH NATIONAL, STATE AND LOCAL ELECTRICAL REGULATIONS.
2. PLEASE REFER TO PRODUCT MANUALS FOR ADDITIONAL DETAILS PRIOR TO INSTALLATION AND SITE PREPARATION WORK.
3. UNLESS OTHERWISE SPECIFIED, ALL DIMENSIONS ARE IN MILLIMETERS [INCHES].
4. FRONT & REAR ACCESS IS REQUIRED FOR SERVICE.
5. A MINIMUM OF 900mm [36 Inches] CLEARANCE IN FRONT AND 1200mm [48 Inches] CLEARANCE IN REAR OF THE UNIT IS REQUIRED IF THE UNIT HAS TO BE REMOVED FROM THE ROW.

APPLICABLE SKU NUMBERS:		
SKU No.	Description	Weight in kg [lb]
ERC601DS1CGS	Row CW 600mm 42U 1070mm Deep, 380-416V, Single feed, Gravity drain	222 [489.43]
ERC601DD1CPS	Row CW 600mm 42U 1070mm Deep, 380-416V, Dual feed, Cond pump	222 [489.43]
ERC601DD1HPS	Row CW 600mm 42U 1070mm Deep, 380-416V, Dual feed, Cond pump, Humid control	232 [511.47]

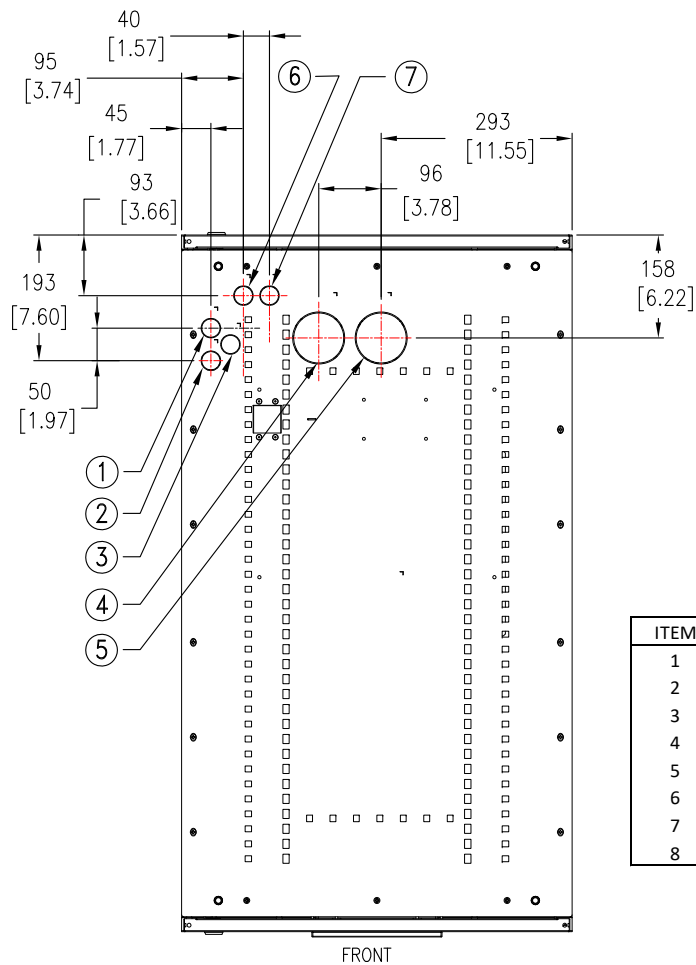
THIS DRAWING AND SPECIFICATIONS HEREIN ARE THE PROPERTY OF SCHNEIDER ELECTRIC AND SHALL NOT BE COPIED, REPRODUCED OR USED IN WHOLE OR IN PART, AS THE BASIS FOR THE MANUFACTURE OR SALE OF ITEMS WITHOUT WRITTEN PERMISSION FROM SCHNEIDER ELECTRIC. THIS DRAWING IS BASED UPON LATEST AVAILABLE INFORMATION AND IS SUBJECT TO CHANGE WITHOUT NOTICE.



TITLE: Easy Cooling
Row CW, Chilled Water
600mm, 42U, 1070mm Deep
380-416V, 3PH, 50/60Hz
GENERAL ARRANGEMENT

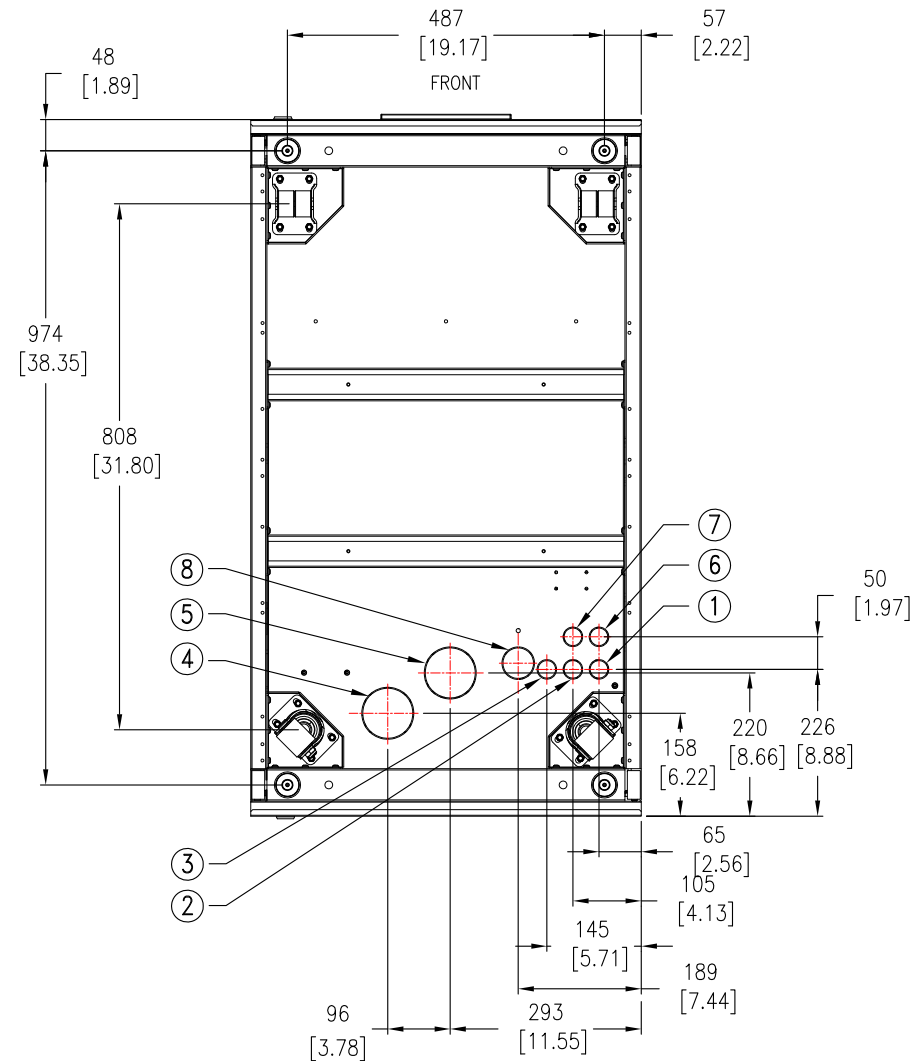
PROJECT: DRAWINGS SHEET 3 OF 13

DWG NO: ERC601		REV: 1
DRAWN: Stone Zhang/JP	25-FEB-20	FIRST ANGLE PROJECTION
ENGINEER: Paul Liu	25-FEB-20	
APPROVED: Tina Zhou	25-FEB-20	



TOP VIEW
(PIPING & POWER FEED LOCATIONS FOR TOP PIPING)

POWER AND PIPING DETAILS	
ITEM	DESCRIPTION
1	INPUT POWER $\phi 30\text{mm}$ [$\phi 1.18$ Inches]
2	BYPASS POWER $\phi 30\text{mm}$ [$\phi 1.18$ Inches]
3	SIGNAL CABLES $\phi 30\text{mm}$ [$\phi 1.18$ Inches]
4	WATER INLET $\phi 80\text{mm}$ [$\phi 3.15$ Inches]
5	WATER OUTLET $\phi 80\text{mm}$ [$\phi 3.15$ Inches]
6	WATER DISCHARGE PIPING $\phi 30\text{mm}$ [$\phi 1.18$ Inches]
7	HUMIDIFICATION WATER SUPPLY $\phi 30\text{mm}$ [$\phi 1.18$ Inches]
8	GRAVITY DRAIN PIPING $\phi 50\text{mm}$ [$\phi 1.97$ Inches]



BOTTOM VIEW
(PIPING & POWER FEED LOCATIONS FOR BOTTOM PIPING)

NOTES:

1. INSTALLATION SHALL COMPLY WITH NATIONAL, STATE AND LOCAL ELECTRICAL REGULATIONS.
2. PLEASE REFER TO PRODUCT MANUALS FOR ADDITIONAL DETAILS PRIOR TO INSTALLATION AND SITE PREPARATION WORK.
3. ALL DIMENSIONS ARE IN MILLIMETERS [INCHES].

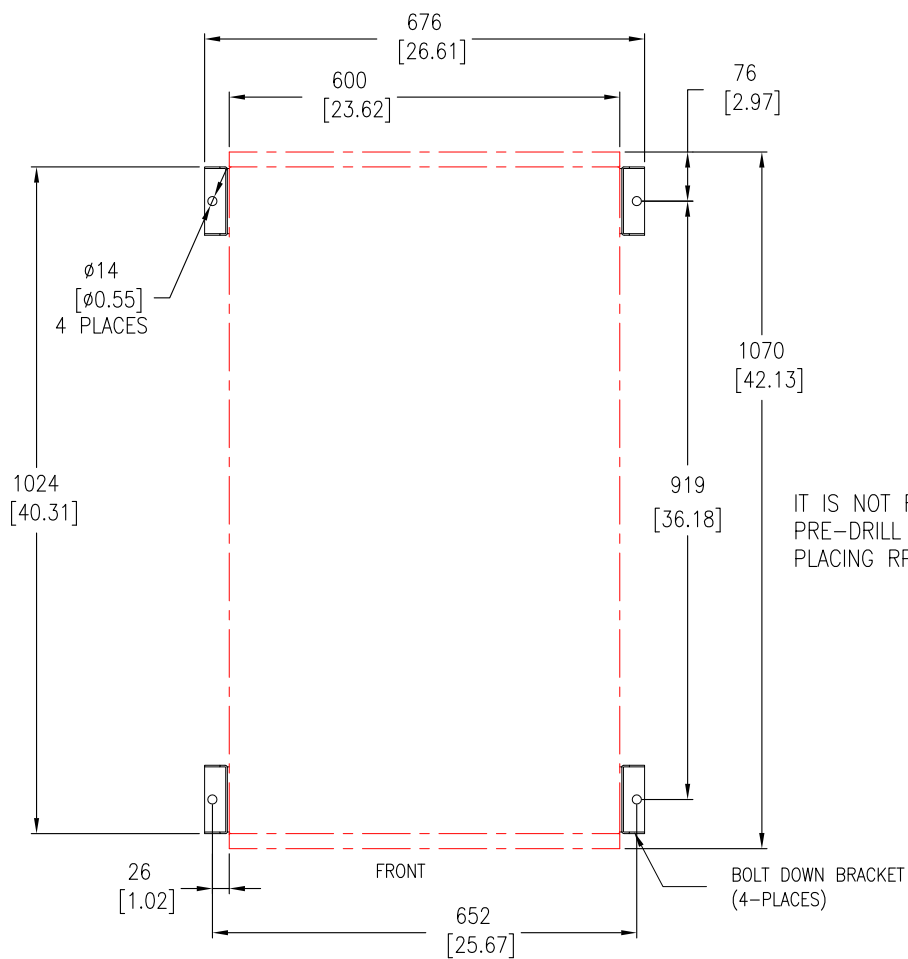
THIS DRAWING AND SPECIFICATIONS HEREIN ARE THE PROPERTY OF SCHNEIDER ELECTRIC AND SHALL NOT BE COPIED, REPRODUCED OR USED IN WHOLE OR IN PART, AS THE BASIS FOR THE MANUFACTURE OR SALE OF ITEMS WITHOUT WRITTEN PERMISSION FROM SCHNEIDER ELECTRIC. THIS DRAWING IS BASED UPON LATEST AVAILABLE INFORMATION AND IS SUBJECT TO CHANGE WITHOUT NOTICE.

Schneider Electric

TITLE: Easy Cooling
Row CW, Chilled Water
600mm, 420, 1070mm Deep
380-416V, 3PH, 50/60Hz
TOP AND BOTTOM VIEW

PROJECT: DRAWINGS SHEET 4 OF 13

DWG NO: ERC601	REV. 0
DRAWN: Stone Zhang/JP	19-DEC-19
ENGINEER: Paul Liu	03-JAN-20
APPROVED: Tina Zhou	03-JAN-20
	FIRST ANGLE PROJECTION



TOP VIEW
(MOUNTING HOLE LOCATIONS
LOOKING FROM TOP)

NOTES:

1. INSTALLATION SHALL COMPLY WITH ALL APPLICABLE NATIONAL, STATE AND LOCAL ELECTRICAL REGULATIONS.
2. REFER TO PRODUCT DOCUMENTATION FOR ADDITIONAL DETAILS PRIOR TO INSTALLATION AND SITE PREPARATION WORK.
3. ALL DIMENSIONS ARE IN MILLIMETERS [INCHES].
4. THE FASTENERS IS GB9074.4-M6*20.
5. REFER TO INSTALLATION MANUAL DETAILED INSTRUCTIONS ON INSTALLING THIS EQUIPMENT.

THIS DRAWING AND SPECIFICATIONS HEREIN ARE THE PROPERTY OF SCHNEIDER ELECTRIC AND SHALL NOT BE COPIED, REPRODUCED OR USED IN WHOLE OR IN PART, AS THE BASIS FOR THE MANUFACTURE OR SALE OF ITEMS WITHOUT WRITTEN PERMISSION FROM SCHNEIDER ELECTRIC. THIS DRAWING IS BASED UPON LATEST AVAILABLE INFORMATION AND IS SUBJECT TO CHANGE WITHOUT NOTICE.

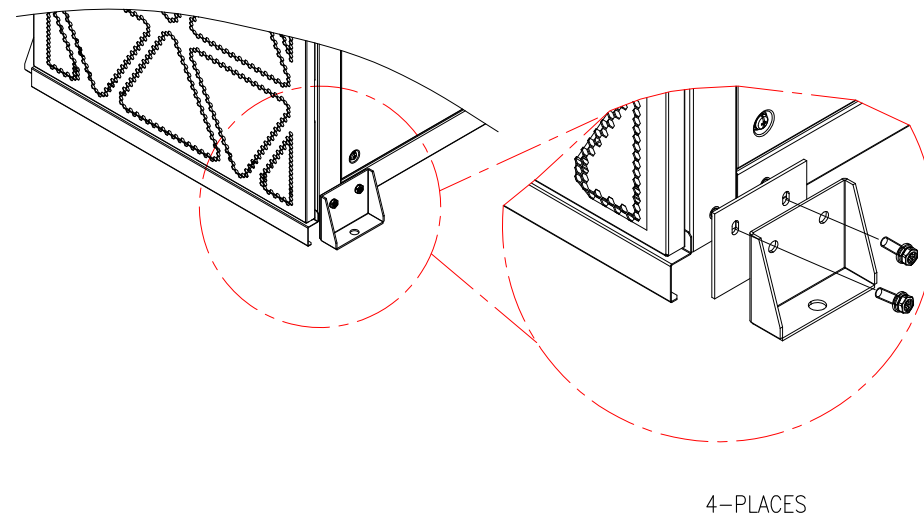
Schneider Electric

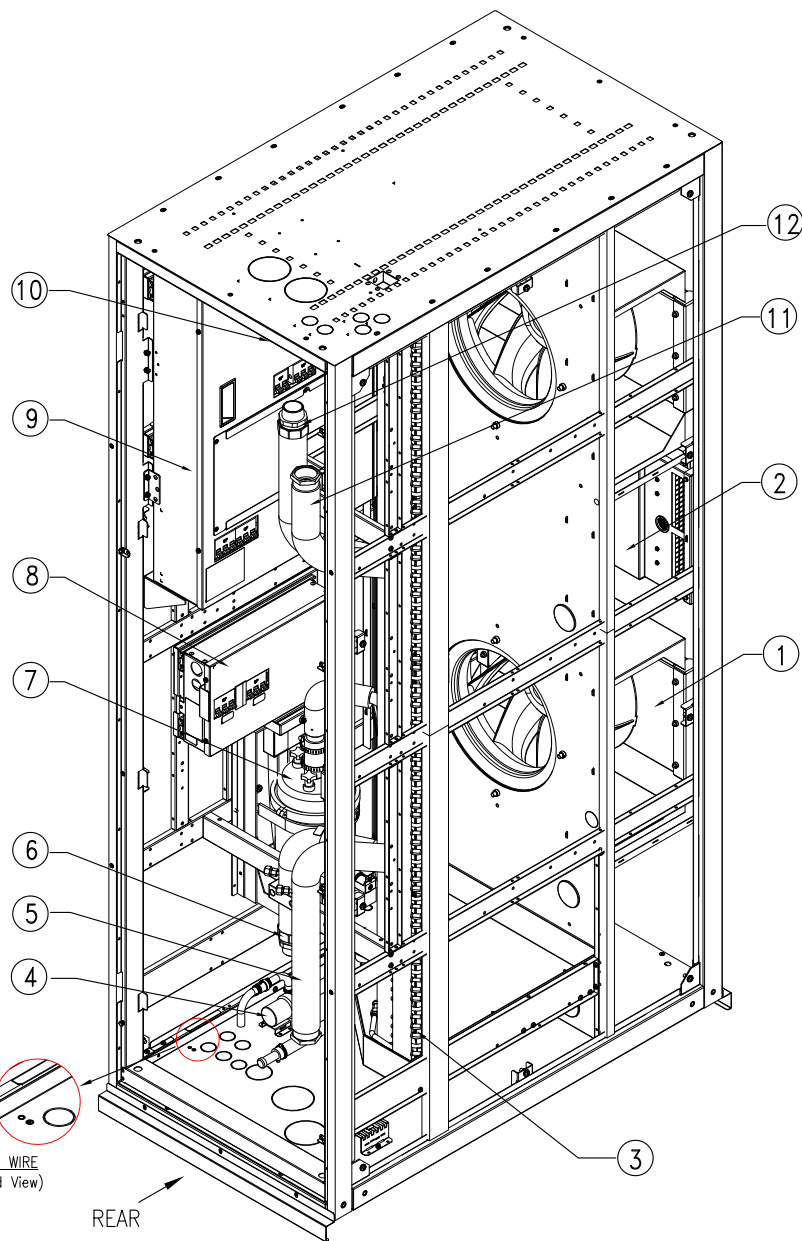
TITLE: Easy Cooling
Row CW, Chilled Water
600mm, 42U, 1070mm Deep
380-416V, 3PH, 50/60Hz
ANCHORING DETAIL

PROJECT: DRAWINGS SHEET 5 OF 13

DWG NO:	ERC601	REV.	0
DRAWN:	Stone Zhang/JP	19-DEC-19	FIRST ANGLE PROJECTION
ENGINEER:	Paul Liu	03-JAN-20	
APPROVED:	Tina Zhou	03-JAN-20	

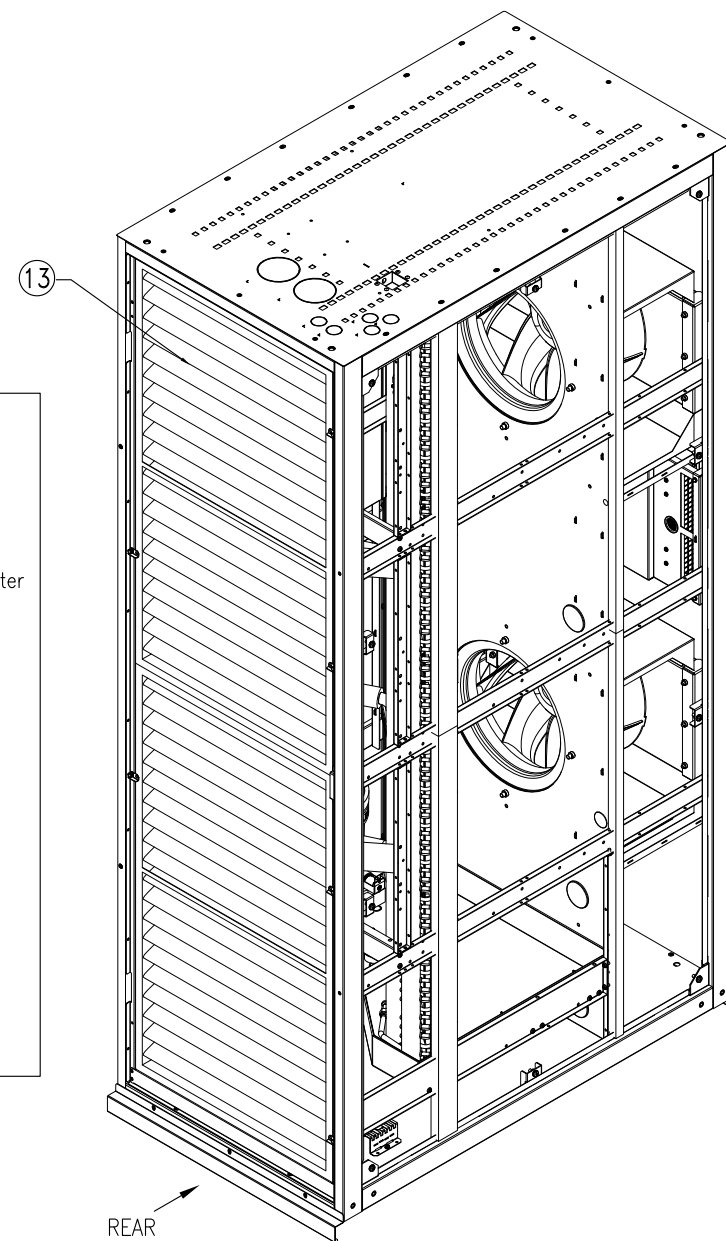
STABILIZING THE ERC611:
TO PREVENT THE ENCLOSURE FROM MOVING FROM ITS FINAL LOCATION (IF NOT BAYED TO ANOTHER DEVICE), ATTACH THE BRACKETS TO THE UNIT AS SHOWN.
USE CODE COMPLIANT FASTENERS TO SECURE THE UNIT TO THE FLOOR.





ISOMETRIC VIEW (Internal-Rear)
(Air Filters removed)

- ① Fan
- ② Electrical Heater
- ③ Heat Exchanger
- ④ Discharge Pump for Condensation Water
- ⑤ Bottom Water Inlet Pipe
- ⑥ Bottom Water Outlet Pipe
- ⑦ Electrode Humidifier
- ⑧ User Interface Connectors
- ⑨ Electrical Panel
- ⑩ Pressure Difference Switch
- ⑪ Top Water Inlet Pipe
- ⑫ Top Water Outlet Pipe
- ⑬ Air Filters



ISOMETRIC VIEW (Internal-Rear)

NOTES:

1. INSTALLATION SHALL COMPLY WITH NATIONAL, STATE AND LOCAL ELECTRICAL REGULATIONS.
2. PLEASE REFER TO PRODUCT MANUALS FOR ADDITIONAL DETAILS PRIOR TO INSTALLATION AND SITE PREPARATION WORK.
3. SOME EXTERNAL AND INTERNAL PANELS, BAFFLES AND AIR BLOCKS HAVE BEEN REMOVED FOR CLARITY.
4. STANDARD OFFERS PROVIDE EITHER TOP OR BOTTOM PIPING CONNECTION.

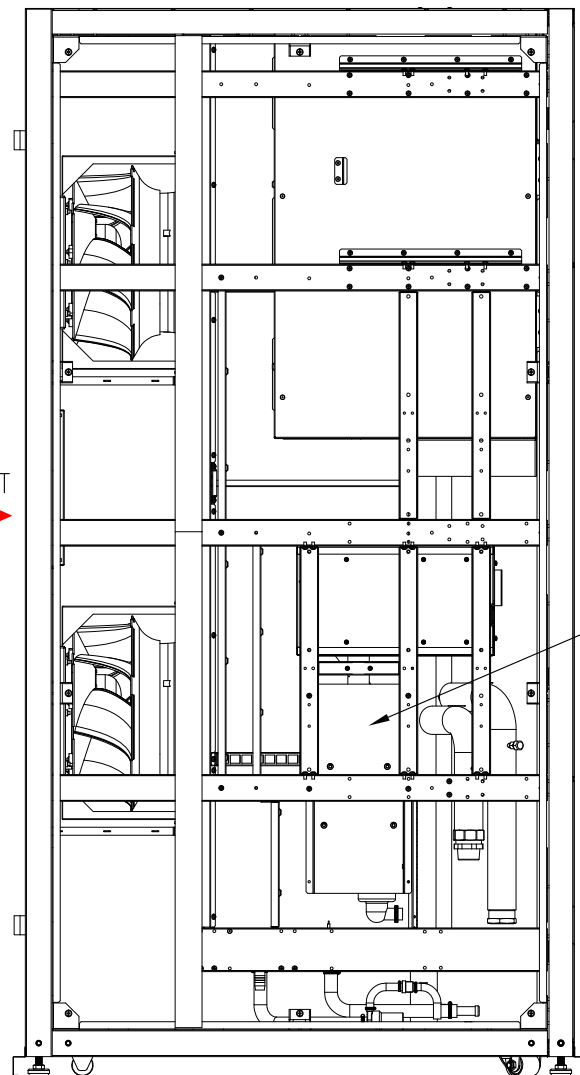
THIS DRAWING AND SPECIFICATIONS HEREIN ARE THE PROPERTY OF SCHNEIDER ELECTRIC AND SHALL NOT BE COPIED, REPRODUCED OR USED IN WHOLE OR IN PART, AS THE BASIS FOR THE MANUFACTURE OR SALE OF ITEMS WITHOUT WRITTEN PERMISSION FROM SCHNEIDER ELECTRIC. THIS DRAWING IS BASED UPON LATEST AVAILABLE INFORMATION AND IS SUBJECT TO CHANGE WITHOUT NOTICE.

Schneider Electric

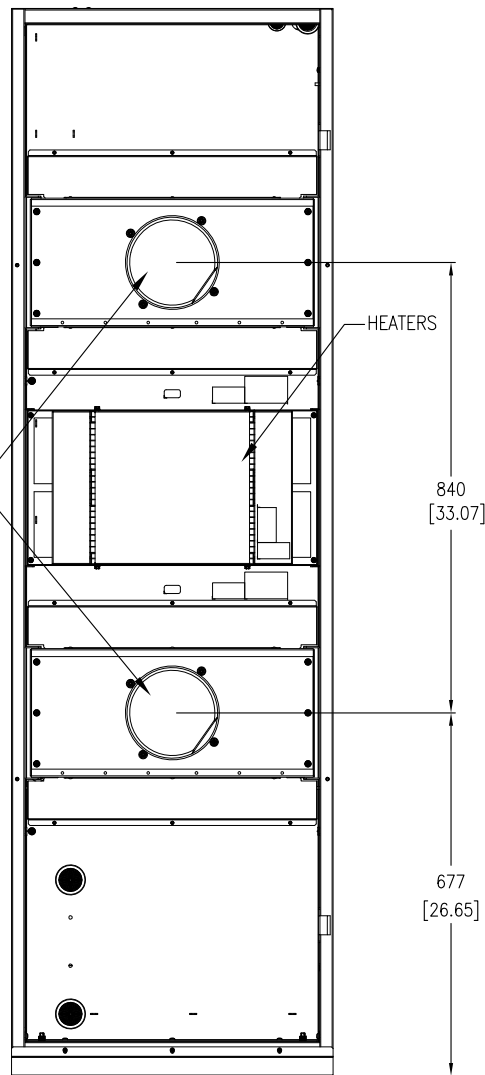
TITLE: Easy Cooling
Row CW, Chilled Water
600mm, 42U, 1070mm Deep
380-416V, 3PH, 50/60Hz
ISOMETRIC VIEW (INTERNAL)

PROJECT: DRAWINGS SHEET 6 OF 13

DWG NO:	ERC601	REV:	0
DRAWN:	Stone Zhang/JP	19-DEC-19	FIRST ANGLE PROJECTION
ENGINEER:	Paul Liu	03-JAN-20	
APPROVED:	Tina Zhou	03-JAN-20	



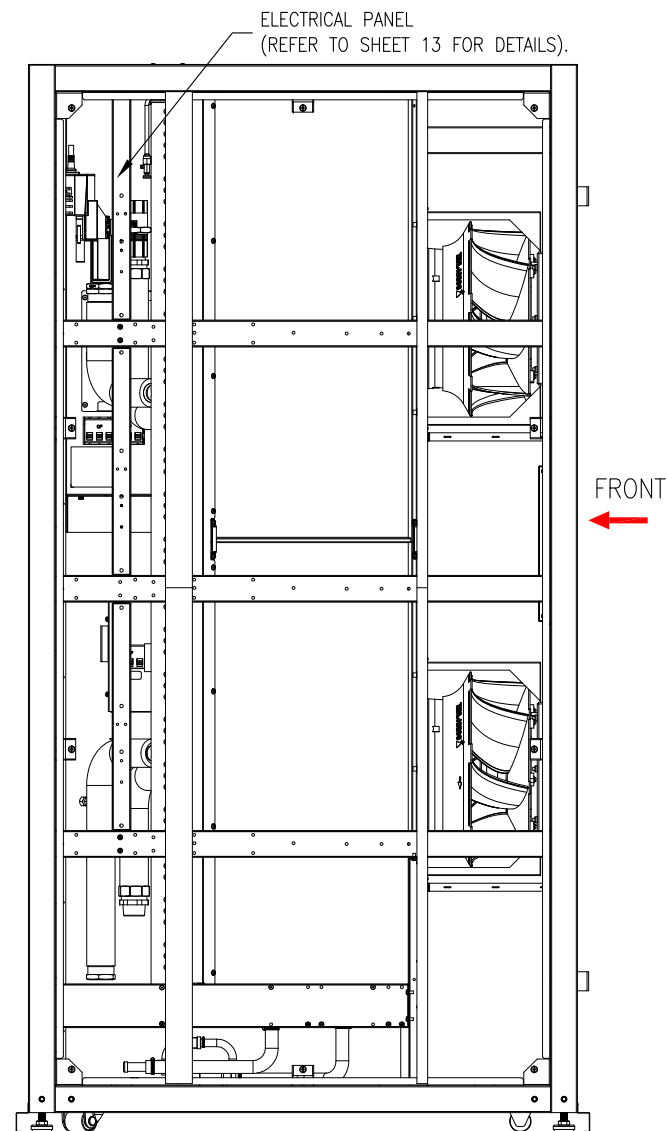
FAN MODULES



—HEATERS

840
[33.07]

677
[26.65]



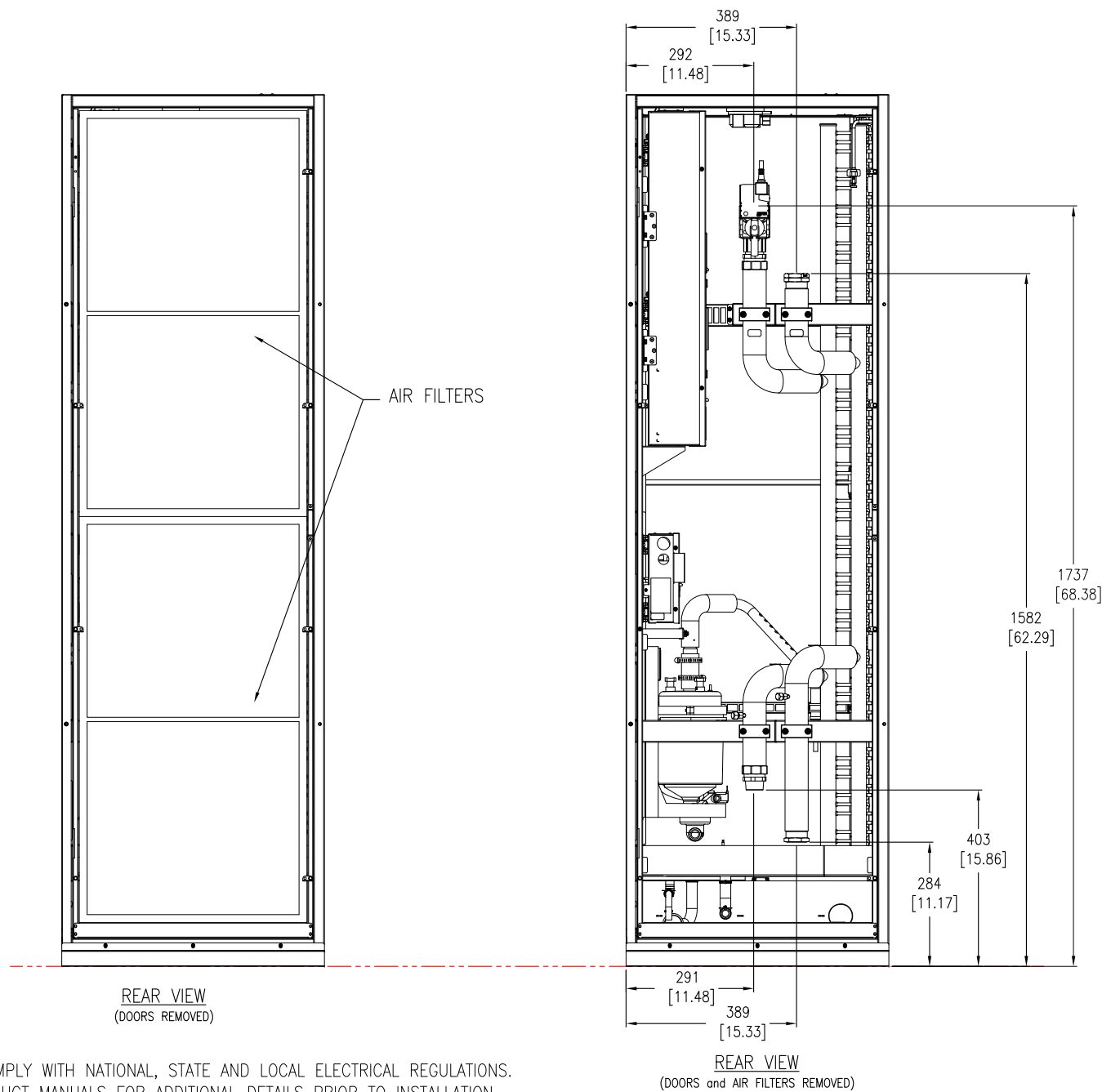
FRONT

1. INSTALLATION SHALL COMPLY WITH NATIONAL, STATE AND LOCAL ELECTRICAL REGULATIONS.
2. PLEASE REFER TO PRODUCT MANUALS FOR ADDITIONAL DETAILS PRIOR TO INSTALLATION AND SITE PREPARATION WORK.
3. ALL DIMENSIONS ARE IN MILLIMETERS [INCHES].
4. SOME EXTERNAL AND INTERNAL PANELS, BAFFLES AND AIR BLOCKS HAVE BEEN REMOVED FOR CLARITY.
5. STANDARD OFFERS PROVIDE EITHER TOP OR BOTTOM PIPING CONNECTION.

Schneider
Electric

PROJECT: DRAWINGS	SHEET 7 OF 13
-------------------	---------------

DWG NO:	ERC601		REV:	0
DRAWN:	Stone Zhang/JP	19-DEC-19	FIRST	
ENGINEER:	Paul Liu	03-JAN-20	ANGLE	
APPROVED:	Tina Zhou	03-JAN-20	PROJECTION	



NOTES:

1. INSTALLATION SHALL COMPLY WITH NATIONAL, STATE AND LOCAL ELECTRICAL REGULATIONS.
2. PLEASE REFER TO PRODUCT MANUALS FOR ADDITIONAL DETAILS PRIOR TO INSTALLATION AND SITE PREPARATION WORK
3. ALL DIMENSIONS ARE IN MILLIMETERS [INCHES].
4. SOME EXTERNAL AND INTERNAL PANELS, BAFFLES AND AIR BLOCKS HAVE BEEN REMOVED FOR CLARITY.
5. STANDARD OFFERS PROVIDE EITHER TOP OR BOTTOM PIPING CONNECTION.

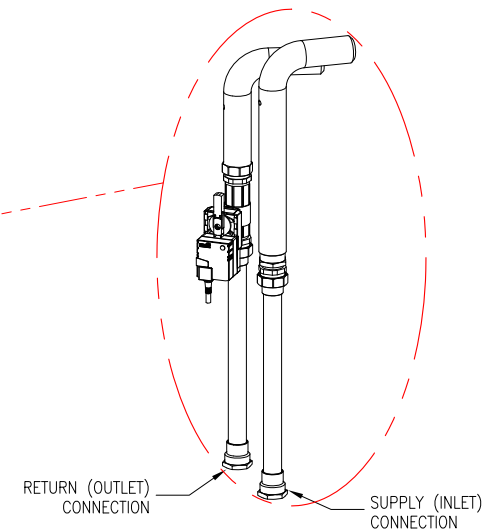
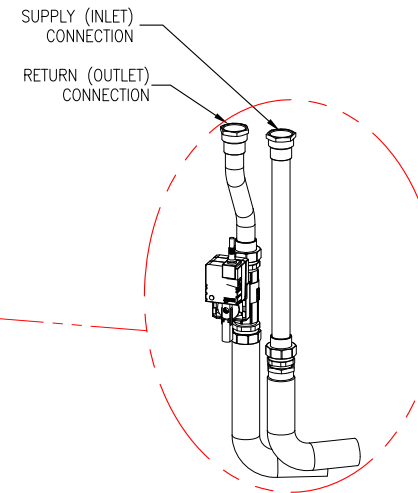
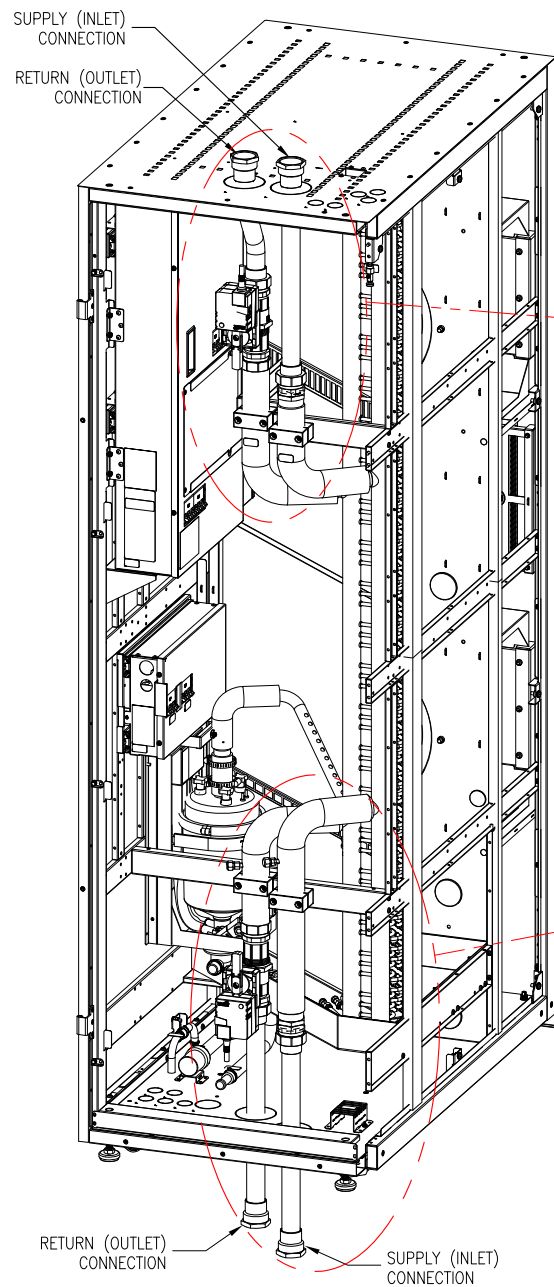
THIS DRAWING AND SPECIFICATIONS HEREIN ARE THE PROPERTY OF SCHNEIDER ELECTRIC AND SHALL NOT BE COPIED, REPRODUCED OR USED IN WHOLE OR IN PART, AS THE BASIS FOR THE MANUFACTURE OR SALE OF ITEMS WITHOUT WRITTEN PERMISSION FROM SCHNEIDER ELECTRIC. THIS DRAWING IS BASED UPON LATEST AVAILABLE INFORMATION AND IS SUBJECT TO CHANGE WITHOUT NOTICE.

Schneider Electric

TITLE: Easy Cooling
Row CW, Chilled Water
600mm, 420, 1070mm Deep
380-416V, 3PH, 50/60Hz
INTERNAL VIEW-REAR

PROJECT: DRAWINGS SHEET 8 OF 13

DWG NO:	ERC601	REV.	0
DRAWN:	Stone Zhang/JP	19-DEC-19	FIRST
ENGINEER:	Paul Liu	03-JAN-20	ANGLE
APPROVED:	Tina Zhou	03-JAN-20	PROJECTION



TOP/BOTTOM PIPING CONFIGURATION

NOTES:

1. INSTALLATION SHALL COMPLY WITH NATIONAL, STATE AND LOCAL ELECTRICAL REGULATIONS.
2. PLEASE REFER TO PRODUCT MANUALS FOR ADDITIONAL DETAILS PRIOR TO INSTALLATION AND SITE PREPARATION WORK.
3. SOME EXTERNAL AND INTERNAL PANELS, BAFFLES AND AIR BLOCKS HAVE BEEN REMOVED FOR CLARITY.
4. STANDARD OFFERS PROVIDE EITHER TOP OR BOTTOM PIPING CONNECTION.

THIS DRAWING AND SPECIFICATIONS HEREIN ARE THE PROPERTY OF SCHNEIDER ELECTRIC AND SHALL NOT BE COPIED, REPRODUCED OR USED IN WHOLE OR IN PART, AS THE BASIS FOR THE MANUFACTURE OR SALE OF ITEMS WITHOUT WRITTEN PERMISSION FROM SCHNEIDER ELECTRIC. THIS DRAWING IS BASED UPON LATEST AVAILABLE INFORMATION AND IS SUBJECT TO CHANGE WITHOUT NOTICE.

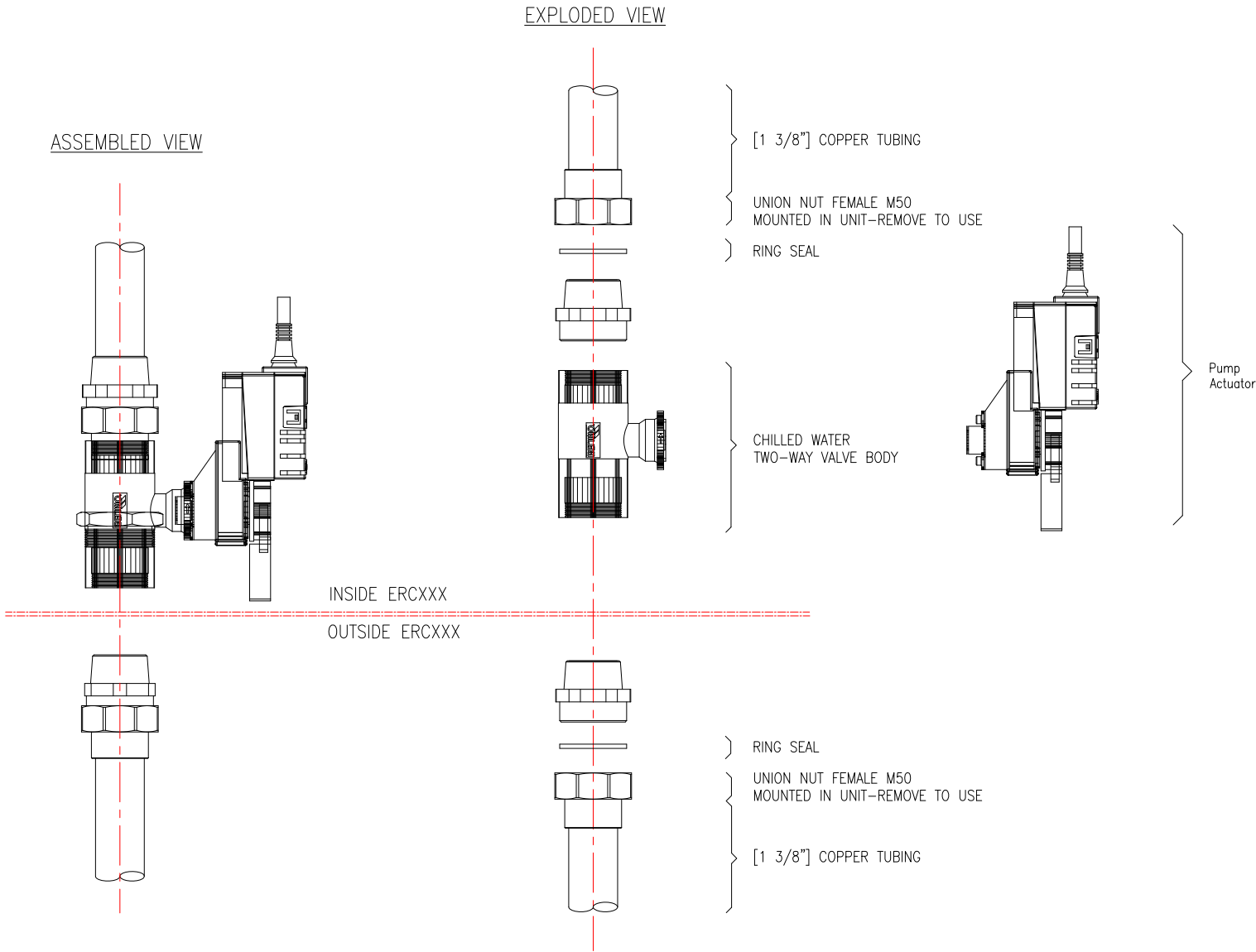
Schneider Electric

TITLE: Easy Cooling
Row CW, Chilled Water
600mm, 42U, 1070mm Deep
380-416V, 3PH, 50/60Hz
INTERNAL VIEW-REAR

PROJECT: DRAWINGS SHEET 9 OF 13

DWG NO:	ERC601	REV.	0
DRAWN:	Stone Zhang/JP	19-DEC-19	FIRST ANGLE PROJECTION
ENGINEER:	Paul Liu	03-JAN-20	
APPROVED:	Tina Zhou	03-JAN-20	

PIPE CONNECTIONS



NOTES:

1. INSTALLATION SHALL COMPLY WITH NATIONAL, STATE AND LOCAL ELECTRICAL REGULATIONS.
2. PLEASE REFER TO PRODUCT MANUALS FOR ADDITIONAL DETAILS PRIOR TO INSTALLATION AND SITE PREPARATION WORK.
3. THE OUTSIDE TUBING SHOULD BE MILD STEEL (DN32) OR STAINLESS STEEL HOSE, (WITH G1½ UNION)
4. IF RING SEAL IS DAMAGED, USE NEW RING SEAL SUPPLIED WITH UNIT.
5. RECOMMENDED TORQUE FOR UNION NUT IS 40Nm [29.5 lbf-ft].

THIS DRAWING AND SPECIFICATIONS HEREIN ARE THE PROPERTY OF SCHNEIDER ELECTRIC AND SHALL NOT BE COPIED, REPRODUCED OR USED IN WHOLE OR IN PART, AS THE BASIS FOR THE MANUFACTURE OR SALE OF ITEMS WITHOUT WRITTEN PERMISSION FROM SCHNEIDER ELECTRIC. THIS DRAWING IS BASED UPON LATEST AVAILABLE INFORMATION AND IS SUBJECT TO CHANGE WITHOUT NOTICE.

Schneider
Electric

TITLE: Easy Cooling
Row CW, Chilled Water
600mm, 42U, 1070mm Deep
380-416V, 3PH, 50/60Hz
PIPE CONNECTION

PROJECT: DRAWINGS SHEET 10 OF 13

DWG NO: ERC601

DRAWN: Stone Zhang/JP 10-JAN-20

ENGINEER: Paul Liu 10-JAN-20

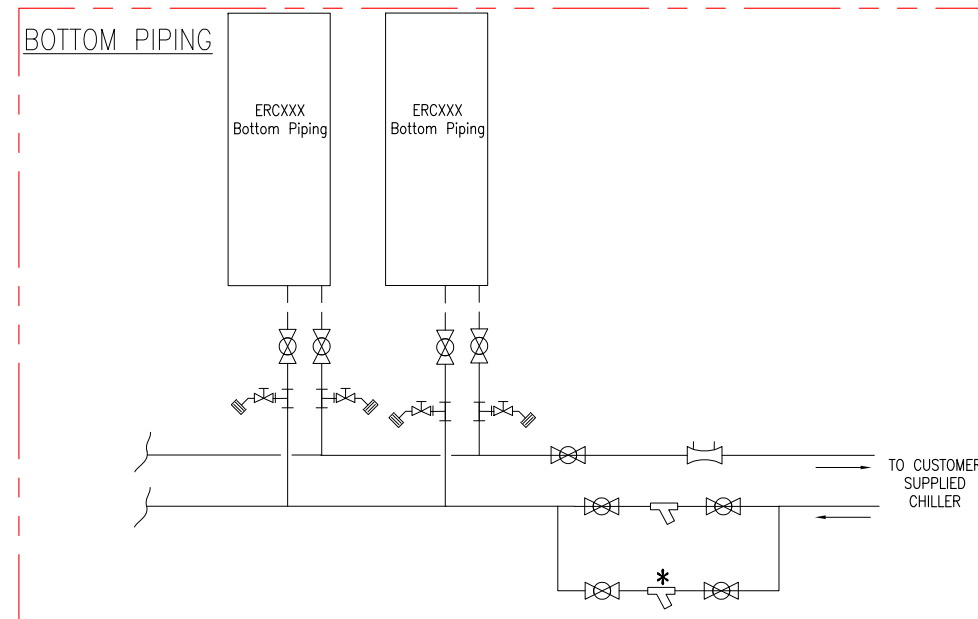
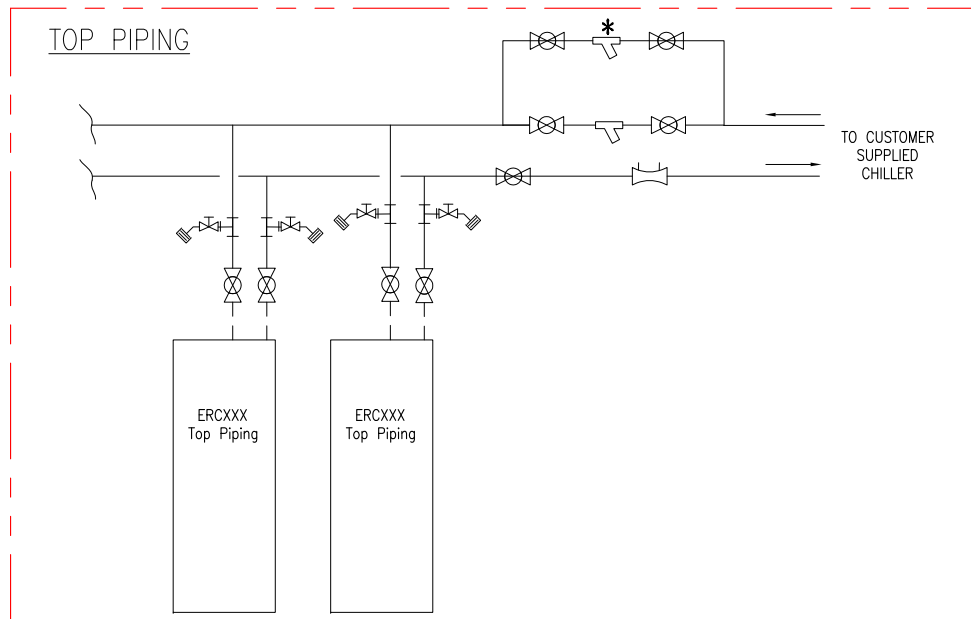
APPROVED: Tina Zhou 10-JAN-20

REV. 1

FIRST

ANGLE

PROJECTION



- Flex hose, Copper, or Steel tubing
- Steel or Copper Tubing
- Shutoff valve (field installed)
- Y-strainer with 20 mesh screen (field installed)
Blow down may be installed on Y-strainer
- * Second Strainer is optional
- Circuit setter (field-installed)
- Hose end drain with cap

NOTES:

1. INSTALLATION SHALL COMPLY WITH NATIONAL, STATE AND LOCAL ELECTRICAL REGULATIONS.
2. PLEASE REFER TO PRODUCT MANUALS FOR ADDITIONAL DETAILS PRIOR TO INSTALLATION AND SITE PREPARATION WORK.
3. ILLUSTRATIONS SHOWS PIPING PROVIDED BY OTHERS.

THIS DRAWING AND SPECIFICATIONS HEREIN ARE THE PROPERTY OF SCHNEIDER ELECTRIC AND SHALL NOT BE COPIED, REPRODUCED OR USED IN WHOLE OR IN PART, AS THE BASIS FOR THE MANUFACTURE OR SALE OF ITEMS WITHOUT WRITTEN PERMISSION FROM SCHNEIDER ELECTRIC. THIS DRAWING IS BASED UPON LATEST AVAILABLE INFORMATION AND IS SUBJECT TO CHANGE WITHOUT NOTICE.

Schneider
Electric

TITLE: Easy Cooling
Row CW, Chilled Water
600mm, 420, 1070mm Deep
380-416V, 3PH, 50/60Hz
PIPING DIAGRAM

PROJECT: DRAWINGS SHEET 11 OF 13

DWG NO:	ERC601	REV.	0
DRAWN:	Stone Zhang/JP	19-DEC-19	FIRST ANGLE
ENGINEER:	Paul Liu	03-JAN-20	PROJECTION
APPROVED:	Tina Zhou	03-JAN-20	

PIPING CONNECTIONS

CONNECTION	TYPE	MODEL	SIZE	TORQUE
CHILLED WATER SUPPLY	THREADED RING SEAL*	ERC601	G1 1/4"	40N-m [29.5 lbf-ft]
CHILLED WATER RETURN				

*USE THE PROVIDED TEFLON RING OR GLUE TO PREVENT LEAKAGE

ELECTRICAL DATA

Model	Type	Rated Voltage	Frequency (Hz)	FLA	Recommended Cable Size
EDC601	cooling only	380~416V	50/60 Hz	6.0A@380V	1.0mm ²
	with Humidifier and Heater	380~416V	50/60 Hz	19.0A@380V	4.0mm ²

NOTE: ABOVE DATA IS BASED ON MAXIMUM OPERATING CONDITION.

- CONSULT LOCAL AND NATIONAL CODES FOR WIRE SIZE, CONDUIT REQUIREMENTS AND OVERLOAD PROTECTION.
- LOCAL OR NATIONAL CODES MAY REQUIRE THE INSTALLATION OF EXTERNAL DISCONNECTS.
TWO DISCONNECTS WOULD BE REQUIRED AND MUST BE RATED PROPERLY FOR THE EQUIPMENT.

NOTES:

1. INSTALLATION SHALL COMPLY WITH NATIONAL, STATE AND LOCAL ELECTRICAL REGULATIONS.
2. PLEASE REFER TO PRODUCT MANUALS FOR ADDITIONAL DETAILS PRIOR TO INSTALLATION AND SITE PREPARATION WORK.

THIS DRAWING AND SPECIFICATIONS HEREIN ARE THE PROPERTY OF SCHNEIDER ELECTRIC AND SHALL NOT BE COPIED, REPRODUCED OR USED IN WHOLE OR IN PART, AS THE BASIS FOR THE MANUFACTURE OR SALE OF ITEMS WITHOUT WRITTEN PERMISSION FROM SCHNEIDER ELECTRIC. THIS DRAWING IS BASED UPON LATEST AVAILABLE INFORMATION AND IS SUBJECT TO CHANGE WITHOUT NOTICE.



TITLE: Easy Cooling
Row CW, Chilled Water
600mm, 420, 1070mm Deep
380-416V, 3PH, 50/60Hz
CONNECTION OVERVIEW

PROJECT: DRAWINGS SHEET 12 OF 13

DWG NO: ERC601

DRAWN: Stone Zhang/JP 19-DEC-19

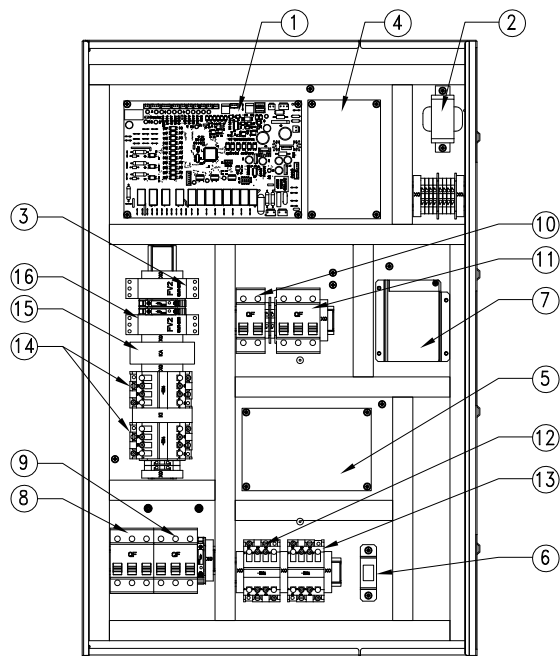
ENGINEER: Paul Liu 03-JAN-20

APPROVED: Tina Zhou 03-JAN-20

REV. 0

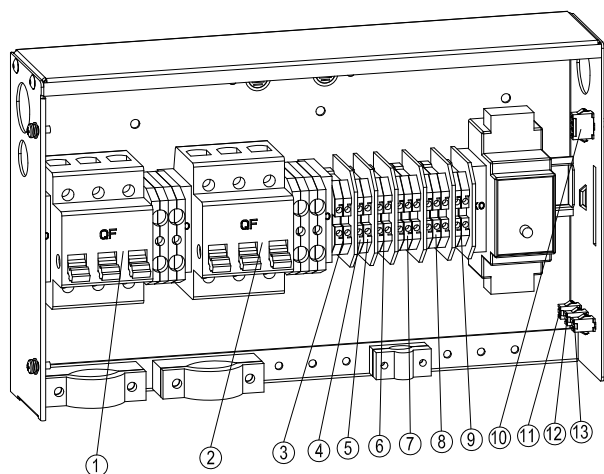
FIRST ANGLE

PROJECTION



ELECTRICAL PANEL

- 1 Main Controller Board
- 2 Transformer
- 3 Power Failure Relay
- 4 Extension Plate
- 5 Humidifier Controller
- 6 Forced Drain Switch For Humidification System
- 7 Switching Power Supply
- 8 Humidification System Switch
- 9 Heating Switch
- 10 Control System Switch
- 11 Fan Supply Switch
- 12 Humidified Electrode Contactor
- 13 Heating Contactor
- 14 Dual Power Switching Contactor
- 15 Intermediate Relay
- 16 Power Monitor



CUSTOMER JUNCTION BOX

- 1 Feed A
- 2 Feed B
- 3 Signal Ground
- 4 Smoke Alarm Port
- 5 Remote Turn-off Switch
- 6 Group Control Communication Port
- 7 Mobile Communication Access Terminal
- 8 Proportional Water Valve Port
- 9 Alarm Connection
- 10 Water Leakage Detection Port
- 11 Rack Inlet Temperature Sensor 1 Port
- 12 Rack Inlet Temperature Sensor 2 Port
- 13 Rack Inlet Temperature Sensor 3 Port

NOTES:

1. INSTALLATION SHALL COMPLY WITH NATIONAL, STATE AND LOCAL ELECTRICAL REGULATIONS.
2. PLEASE REFER TO PRODUCT MANUALS FOR ADDITIONAL DETAILS PRIOR TO INSTALLATION AND SITE PREPARATION WORK.

THIS DRAWING AND SPECIFICATIONS HEREIN ARE THE PROPERTY OF SCHNEIDER ELECTRIC AND SHALL NOT BE COPIED, REPRODUCED OR USED IN WHOLE OR IN PART, AS THE BASIS FOR THE MANUFACTURE OR SALE OF ITEMS WITHOUT WRITTEN PERMISSION FROM SCHNEIDER ELECTRIC. THIS DRAWING IS BASED UPON LATEST AVAILABLE INFORMATION AND IS SUBJECT TO CHANGE WITHOUT NOTICE.

Schneider Electric

TITLE: Easy Cooling
Row CW, Chilled Water
600mm, 420, 1070mm Deep
380-416V, 3PH, 50/60Hz
ELECTRICAL PANEL & CUSTOMER JUNCTION BOX
PROJECT: DRAWINGS SHEET 13 OF 13

DWG NO:	ERC601		REV.	0
DRAWN:	Stone Zhang/JP	19-DEC-19	FIRST ANGLE	
ENGINEER:	Paul Liu	03-JAN-20	PROJECTION	
APPROVED:	Tina Zhou	03-JAN-20		